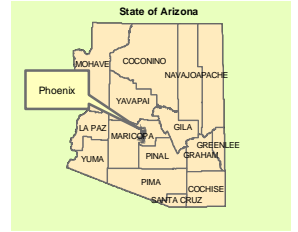
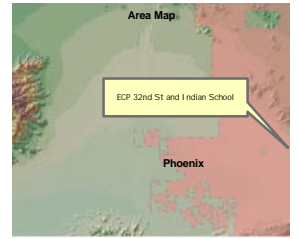
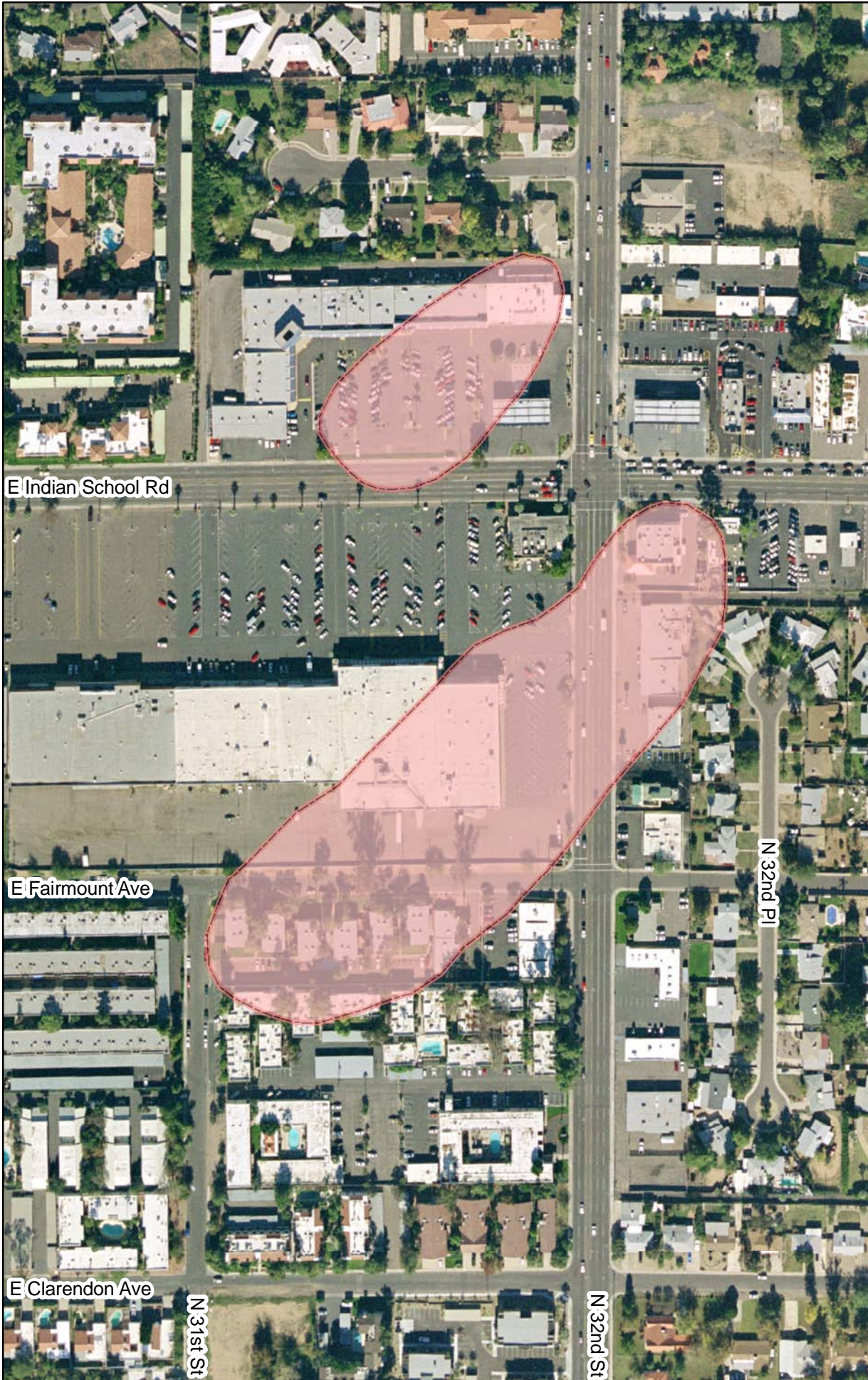


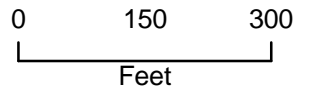
East Central Phoenix (ECP) 32nd Street and Indian School Road WQARF Site



Legend

 Estimated Plume Boundary

N



Phoenix, Arizona
July, 2009

WASTE PROGRAMS DIVISION
GIS and Data Management Unit

Map produced by Arizona Department of Environmental Quality (ADEQ), GIS and Data Management Unit, TS Summers

D:\superfund\Phoenix\2009\ecp-32is\projects09\ecp-32is09.mxd.

Data Sources: Arizona Department of Environmental Quality, Arizona Land Resources Information System, Arizona Department of Transportation.
Image: Maricopa County 2004
Projection: UTM, Nad 83, Meters

"Site boundaries depicted on the site map represent ADEQ's interpretation of data available at the time the map was constructed. The map is intended to provide the public with basic information as to the estimated geographic extent of known contamination as of the date of map production. The actual extent of contamination may be different. Therefore, the geographic boundaries for this site may change in the future as new information becomes available."